

# 483 DRIGGS AVENUE

WILLIAMSBURG, BROOKLYN

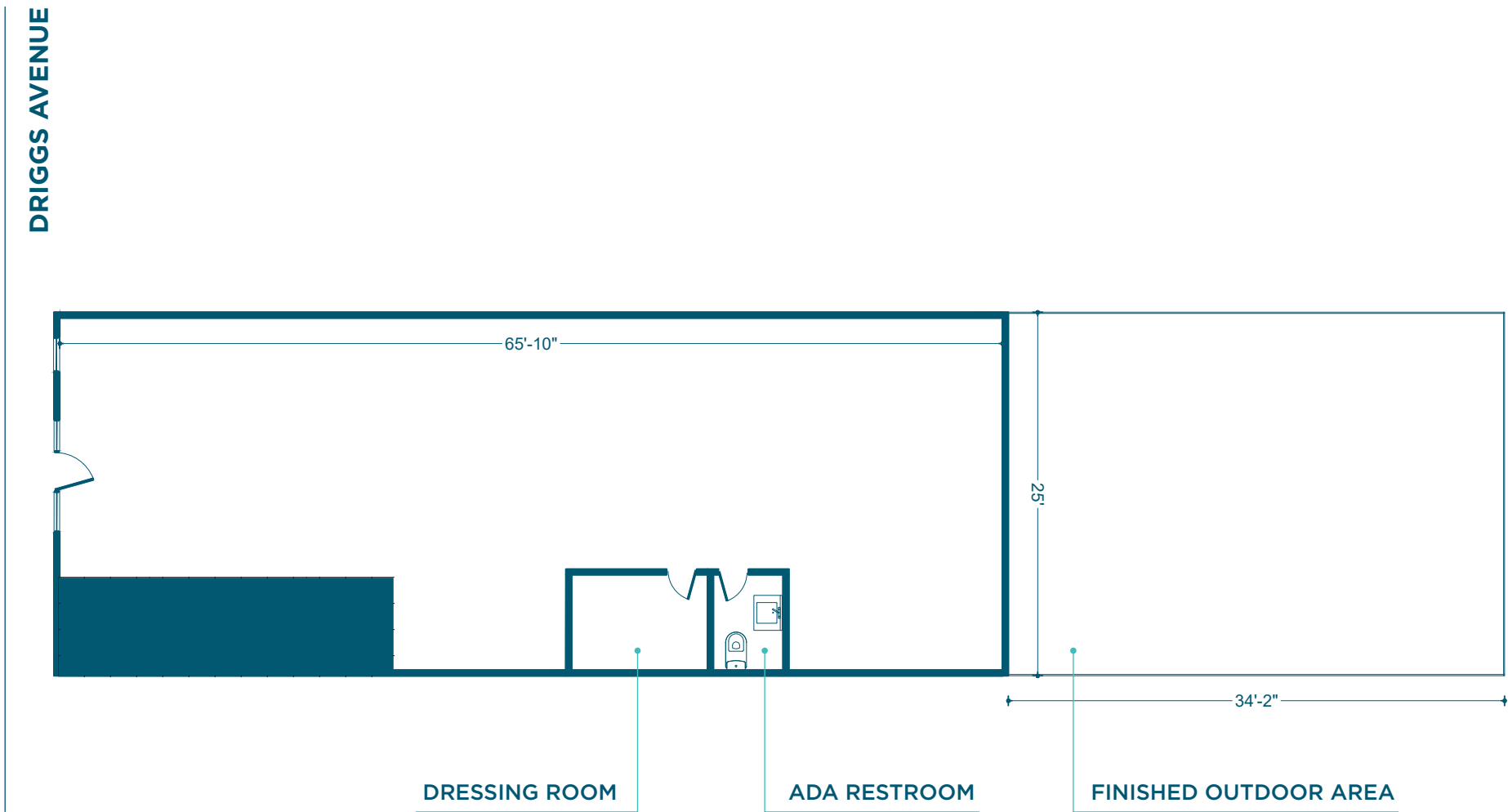


RETAIL SPACE  
FOR LEASE

SPACE HIGHLIGHTS

AVAILABLE SPACES	LOCATION
Ground Floor - 1,625 SF	Corner of Driggs Avenue & N 10th Street
CEILING HEIGHT	FRONTAGE
10 FT	25 FT
DIMENSIONS	ZONING
25 FT x 100 FT	M1-2
OCCUPANCY	ASKING RENT
Immediate	Upon Request
DESCRIPTION	HIGHLIGHTS
Welcome to 483 Driggs Avenue, in the Heart of NORTH WILLIAMSBURG, steps from legendary BEDFORD AVENUE, McCarren Park, and the L-Subway Train! A sexy, gut-renovated building with a FINISHED Outdoor Area! If you want to be in the middle of all the action, this is where it is at--get it now, as the space will lease soon.	<ul style="list-style-type: none"><li>• Finished Outdoor Area w/Canopies</li><li>• Renovated Facade   Lower Level Storage</li><li>• Wide-Oak Flooring   HVAC/Furnaces</li><li>• Surround Sound audio system   New Boilers</li><li>• Sprinkler System   Closed-Circuit Security Cameras</li><li>• Floor-to-Ceiling Windows</li><li>• High Ceilings   Track Lighting</li><li>• Dressing Rooms (Can be removed)</li></ul>

FLOORPLANS & DETAILS





# WILLIAMSBURG BROOKLYN

# 483 DRIGGS AVENUE

## EXISTING CONDITION

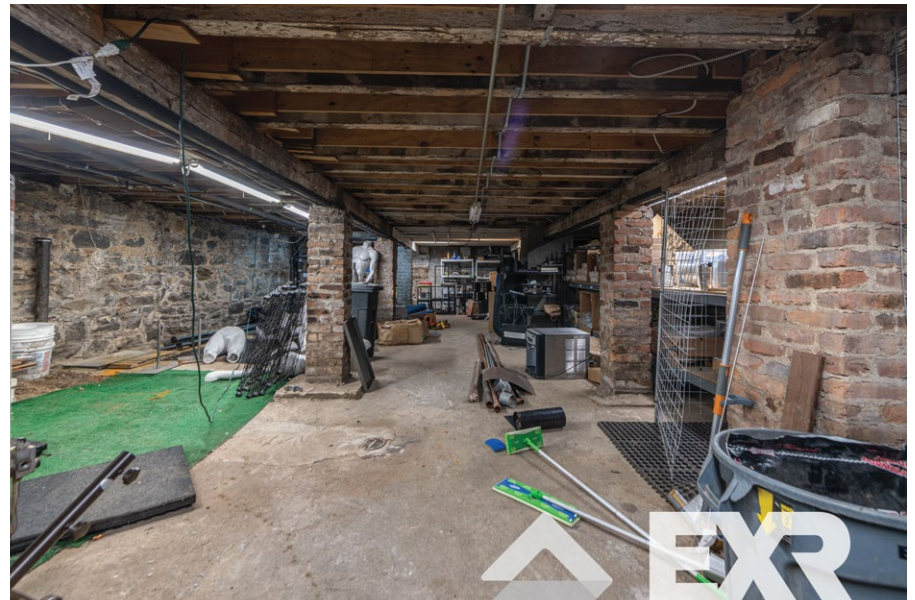
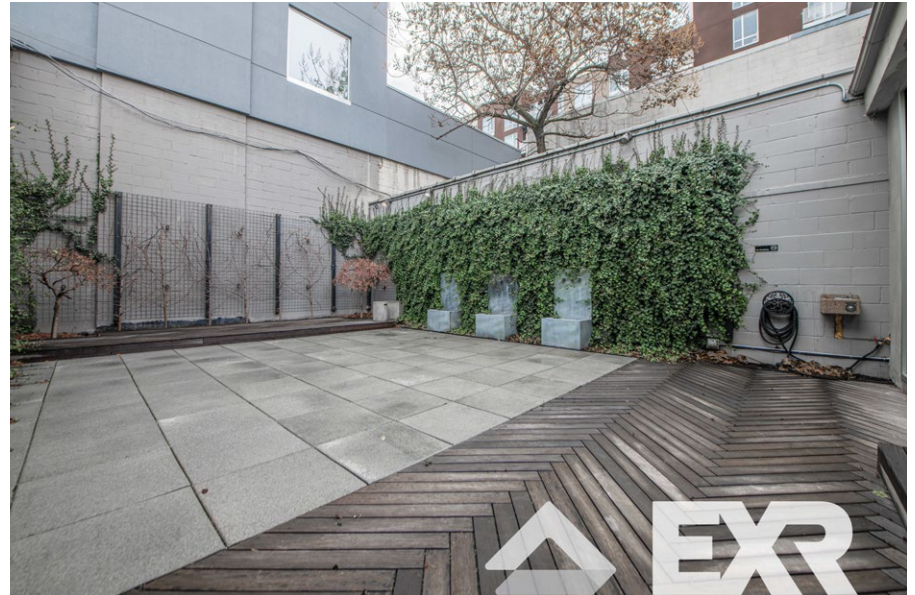




# WILLIAMSBURG BROOKLYN

# 483 DRIGGS AVENUE

## EXISTING CONDITION



# WILLIAMSBURG BROOKLYN

483 DRIGGS AVENUE

## NEIGHBORHOOD DEMOGRAPHICS



154,409

POPULATION  
WITHIN 1-MILE  
RADIUS



35 Yrs

AVERAGE  
POPULATION  
AGE



3.0%

POPULATION  
GROWTH  
SINCE 2010



\$127,784

AVERAGE HHI  
WITHIN 1-MILE  
RADIUS



4,417

TOTAL BUSINESSES  
WITHIN 1-MILE  
RADIUS



\$1.3 bn

ANNUAL SPENDING  
WITHIN 1-MILE  
RADIUS

# WILLIAMSBURG BROOKLYN

# 483 DRIGGS AVENUE

## NEIGHBORHOOD & TRANSPORTATION

### NEIGHBORHOOD TENANTS

Apple Williamsburg  
Whole Foods Market  
Juliette  
Mother of Junk  
Roebling Sporting Club  
Buffalo Exchange  
Fushimi  
McCarren Park Greenmarket  
Turkey's Nest  
The Bedford  
McCarren Hotel & Pool  
NY Martial Arts Academy Brooklyn  
The UPS Store  
Hotel Delmano  
Vinnie's  
Sweet Chick  
SEA  
Best Pizza  
Lion's Milk  
Sweetwater  
Pinkerton Wine Bar  
UMD Urgent Medical Care  
Wild Ginger  
Egg Shop  
Rough Trade NYC

### TRANSPORTATION

9 Min walk at Bedford Avenue (0.2 mi)  
10 Min walk at Metropolitan Avenue (0.5 mi)  
11 Min walk at Lorimer Street (0.5 mi)  
11 Min walk at Nassau Avenue (0.5 mi)  
16 Min walk at Graham Avenue (0.8 mi)





**WILLIAMSBURG BROOKLYN**

**483 DRIGGS AVENUE**

**CONTACT**



**JOSEPH DIPIAZZA**  
917.789.3009  
JDIPIAZZA@EXRNY.COM

**STEPHEN FORINO**  
203.910.2025  
SFORINO@EXRNY.COM

